

*Well*#



3,000,000

Bottles Saved

# *Well*#

## SMART WATER STATION

EMPOWERED BY



CREATED IN HONG KONG

Urban Spring strives to reduce single-use plastic bottles by building a network of water refill stations with its proprietary *Well*#, an innovative, smart-technology water station. Through accessible water refill points around the city, Urban Spring hopes to redefine the water drinking experience outside of homes and empower urbanites to make a smarter, more sustainable choice.

Join us, join the *Well*# network! More *Well*#, less plastic!



## SMART FUNCTION

### - Smart sensors & real time monitoring

to enable real-time monitoring of filter effectiveness and ensure optimal performance for a positive refilling experience

### - Customizable sleep mode

to reduce energy consumption

### - 10" LCD Screen

to provide instant user engagement by displaying the number of bottles saved or customized visuals



## USER-CENTRIC DESIGN

### - Professional lab testing of water source

to ensure appropriate filters are used to cater for different filtering needs

### - International NSF certified filtration system

to ensure clean and safe drinking water quality

### - Temperature-responsive regulator and cooling algorithm

to ensure a refreshing, ambient water supply

### - Programmable auto-rinse

to safeguard risk of bacteria growth

### - Hidden contactless nozzle

to prevent contact and safeguard hygiene

### - Wheelchair and kids-friendly button control



## SMART DATA REPORT

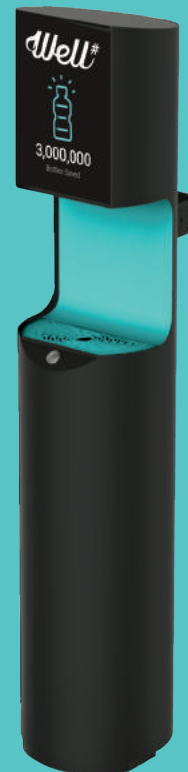
### - Bottles saved

### - Transaction details

### - Operating condition

### - User's behavior

## SPECIFICATION



**Cylindrical stainless steel body**

#### Dimension:

- 160cm H x 32 cm Dia.
- Dispensing space (semi-circular area) : 30cm W x 15cm D x 30cm H

**Weight:** 50 kg

#### Capacity:

- Water flow rate at 1.5 - 2.5L/min
- Cold water tank 1.9L

**Certification:** NSF #42 and #53 filter

#### Recommended operating environment:

- Indoor
- Operating temp 10 - 40°C
- Operating water pressure between 35psi to 65 psi
- Humidity: <80%

#### Microcomputer system:

- Operating system: Android version
- Display: 10.1" WUXGA 16:10 Color TFT-LCD with LED backlight, Pixel 1920 x 3(RGB) x 1200
- Wireless internet connection capability: WiFi
- 7 smart sensors:
  - water flow sensor
  - water leak level detect sensors
  - temperature sensors
- Speaker: 4ohm, 3W/4W
- Power supply: 220-240VAC 50Hz; 13A type G socket with fuse

#### Accessories:

Wall mount kit